

Evaluation Report - The Possibility of Colour - Northwest Tour 2022

The Project

This 14 year project covers the development and 1st full production of my play 'The Possibility of Colour'.

The play has been created with input at every stage from health professionals, academics, students and people with lived experience of the themes explored within the play.

These themes include mental health treatment, social attitudes to 'normalcy' and divergence, forced treatment, coercive control, voice hearing, neurodivergence, synaesthesia, the use of Artificial Intelligence in healthcare and much more.

One of the main aims of the project is for the play to be used as a powerful, immersive and challenging pedagogical tool within the training of compassionate and reflective health professionals.

Following 2 extensive periods of research and development in 2015/16 and 2021, the play enjoyed its first full production and tour in November and December 2022. The tour included 10 live performances of the play at 3 theatre venues (in Salford, Preston and Ormskirk), plus 2 online sharings of a recorded performance and 2 in person screenings of the recorded performance for student nurses in Nottingham.

Each performance and screening was followed by an audience Q&A discussion with invited guest experts.

Thanks to funding from Health Education England, 1,350 student nurses were given the opportunity to attend a performance and post-show Q&A discussion for free. Attending the play and Q&A (plus reflection time) was counted as official placement/practice hours as part of their nurse training.



Promotional material from 2022 tour of The Possibility of Colour

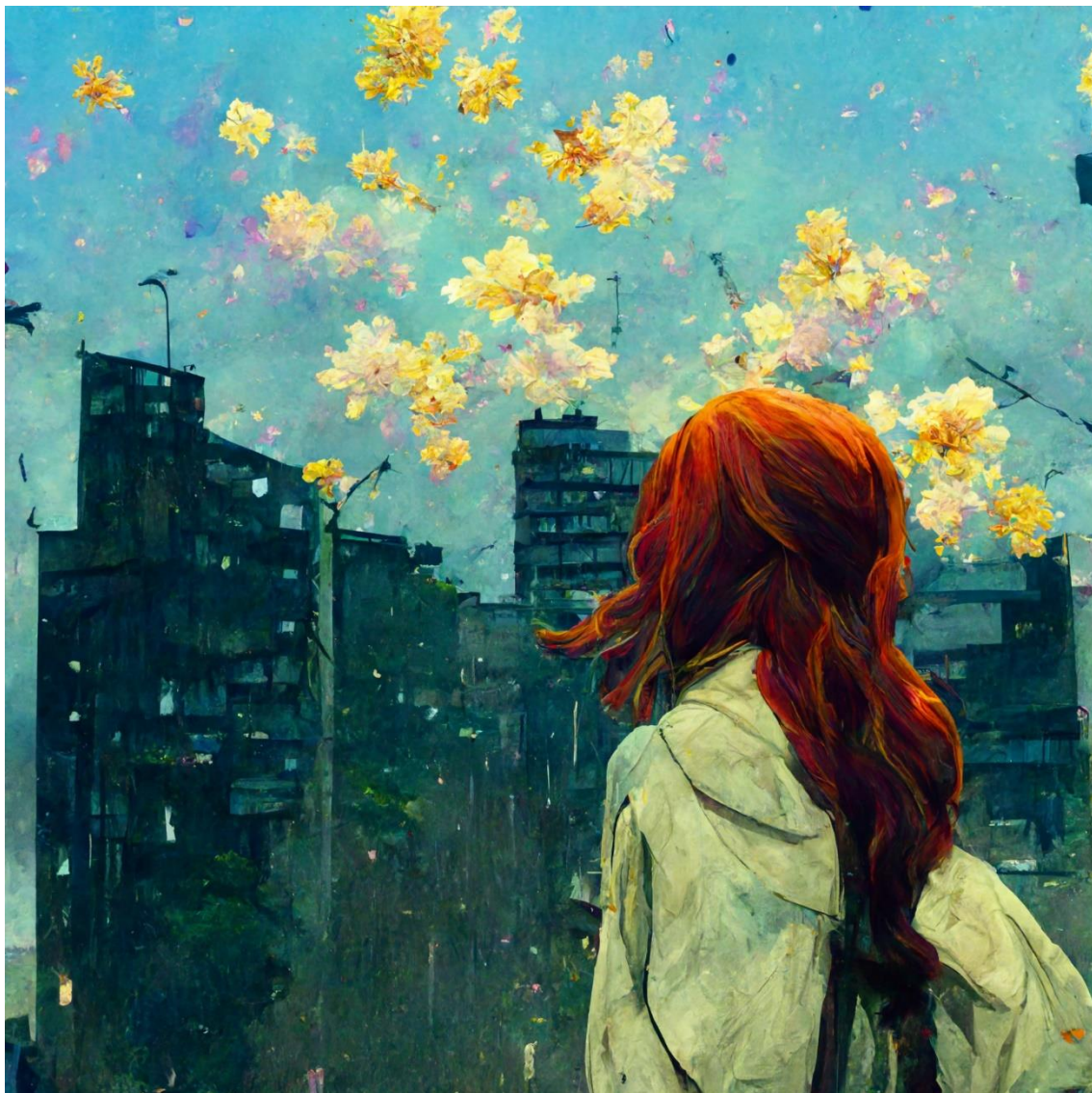
We have plans to take the play on a much larger national tour in 2024 when we hope to expand this offer to thousands more student nurses, and potentially even more students and professionals from all fields of health and social care.

This evaluation report is based on written audience feedback from the 2022 tour of the play.

The report will be used to support the further development of the project.

Report Contents

Page 1	Introduction to the project.
Page 2	Report contents.
Page 3	Data collection method & breakdown of respondents by occupation.
Pages 4 - 13	Thematic summary of answers to the questionnaire.
Pages 14 - 30	Appendix - wider selection of audience responses to the questions requiring a narrative response, broken down into responses from four distinct groups: <ul style="list-style-type: none">A. Student nurses.B. Health professionals & Health lecturers.C. Audience members who identified as having lived experience of the themes explored.D. All other audience members.



The Possibility of Colour - main promo image

Data collection method & breakdown of respondents by occupation.

After each performance and post-show discussion, participating audience members were encouraged to complete a hand-written or online feedback questionnaire.

4 live performances and 2 in-person screenings of a recorded performance were held exclusively for nursing students and lecturers.

6 live performances and 2 online sharings of a recorded performances were presented to mixed audiences of nursing students, lecturers, theatre students, health professionals, people with lived experience of the themes explored within the play and members of the wider public.

Not all audience members completed the evaluation forms. Those who did comprised the following:

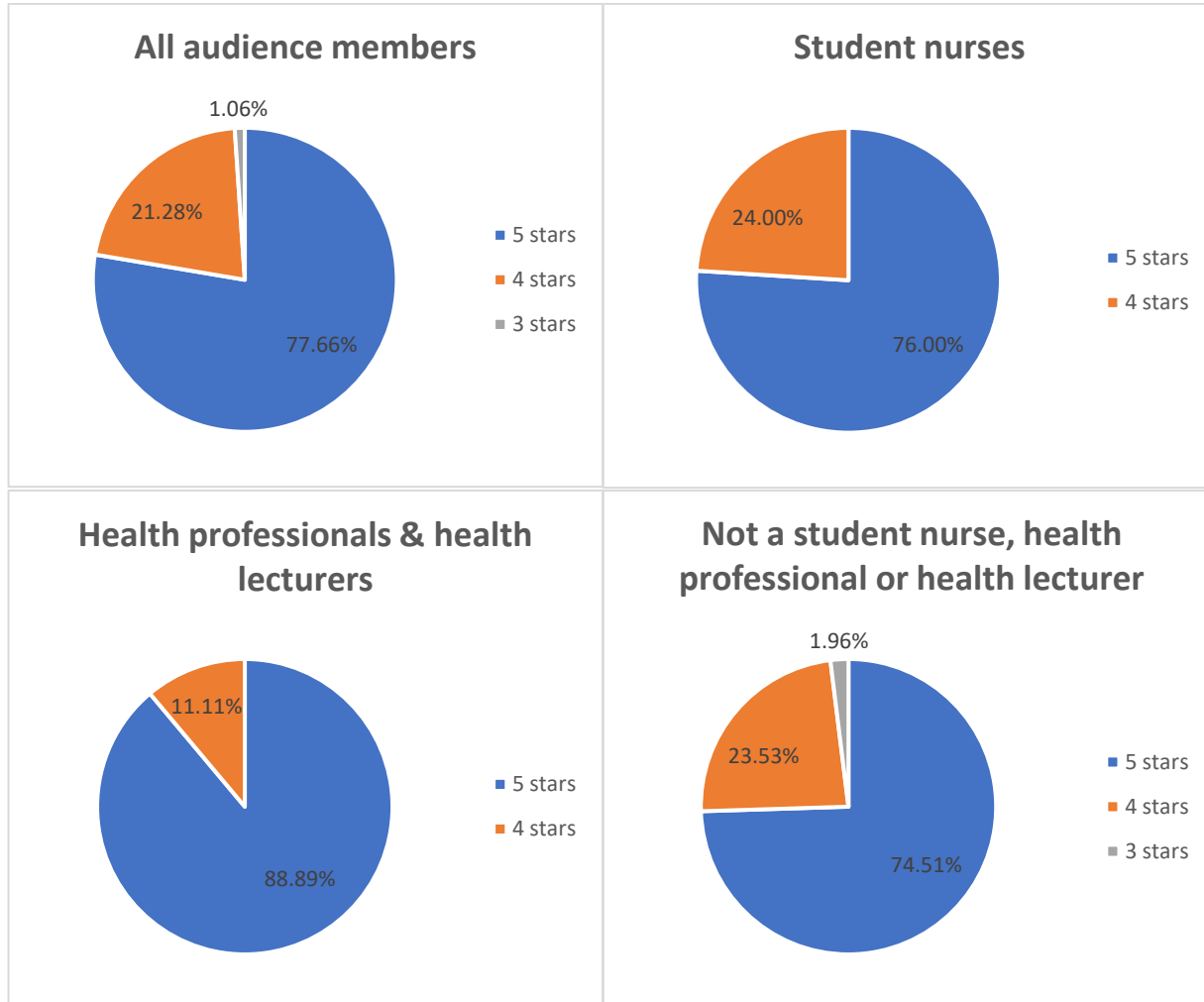
Occupation	Number of audience members	Further breakdown
Student nurses	25	Majority of student nurses who attended were mental health nursing students, but there were also students from other fields of nursing in attendance.
University lecturers	7	2 x MH Nursing lecturers 2 x Nursing lecturers 3 x other fields
Health workforce	11	Specialist Nurse - Early Intervention Psychosis Nurse Clinical psychologist (x2) Trainee clinical psychologist Counsellor/psychotherapist (x2) Doctor Psychiatrist Health care assistant Mental health Lived experience engagement and inclusion facilitator
Others	51	Lawyer, Postwoman, Business owner (x2), Delivery driver, Artist/inventor/healer, Writer/educator, Student (non-nursing x10), Retired (x8), Unemployed, Conductor, Choir leader/musician/writer, Arts technician, Healthcare volunteer, Graduate consultant, PA, Managing director/founder, Actor, Company director & Mum! & Grandmum!, Project coordinator @ mental health charity & journalist, Charity work (research and insights), Volunteer, HGV driver, Personal trainer, Brand consultant, Project officer, Arts admin, Celebrant (ex-mental health social worker), Architect, Self-employed auditor

Audience Responses.

Q1: How would you rate the play out of 5 stars?

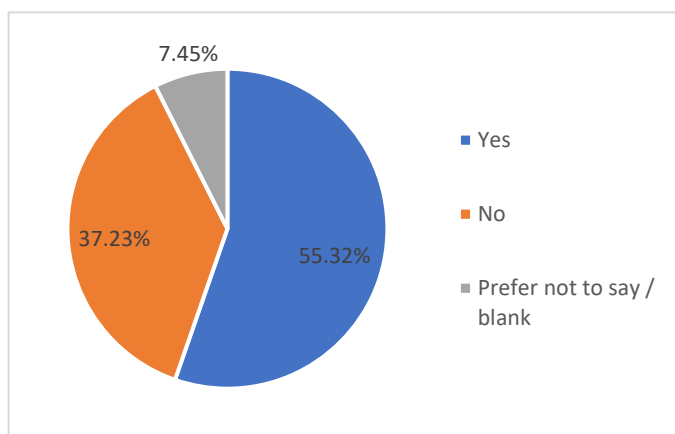
For this question, the data has been broken down to show the variance in responses between student nurses, health professionals & health lecturers and other audience members.

The overall average score was 4.8 out of a maximum of 5 stars.



Q2: Do you consider yourself to have lived experience of the themes explored in the play?

Audience members were not asked to specify which of the themes they had lived experience of, but the themes covered by the play include mental health treatment, forced treatment, neurodiversity (including synaesthesia), voice hearing, coercive control, societal pressures around 'normalcy', and many more.



Q3: What would you like to say about the play?

Responses have been collated into the following themes:

i. **Praise of quality, accuracy, sensitivity, complexity & sincerity.**

One of the most frequent themes that came up in audience members' responses to this question was general praise of the quality of the play, as well as more specific praise around the accuracy, sensitivity, complexity and sincerity with which it tackles the themes.

'A truly incredible production. The story was gripping and compelling. The acting was on point. The set and effects brought beautiful layers to the piece. It's [difficult] to put it all into words as everything about the play was excellent and it far exceeded my expectations. I hope many people across the country will also get to see it - the whole room was spellbound and we all learned so much and were rooting for the characters.'

'Absolutely brilliant. Thought-provoking and deeply insightful. Not just a black-and-white understanding of the difficulty but shows the complexity of the issues and struggles.'

'It was the utter sincerity of every moment that really bowled me over to be honest.'

ii. **Challenges highlighted, questions provoked. Creative and novel way to learn.**

Many audience members commented that the play successfully highlights specific challenges within mental health, with some sharing the specific questions that they felt the play asks. Many people also offered praise for the play as a creative and novel way to learn, with some going on to identify the specific learning points they observed.

'It highlighted some important challenges to our existing mental health system around diagnosis, hospitalisation and patient autonomy. It was a powerful portrayal about how technology and the automation of services pose serious threats to patient autonomy and least restrictive practices. It was also really effective at portraying how social conventions can lead to the misinterpretation of what mental illness is and how professionals interact with people presenting with challenging behaviour.'

'An excellent educational tool for students & window into mental health. Real life experience - delivered in a safe environment.'

'As a means to educating, beyond the theatre, the content & performance I think could have massive impact on exactly the people this "overall package" is aimed at: students / service users / academic staff / nursing staff - all disciplines.'

'I'm so glad medical professions were encouraged to attend, because if heartfelt curiosity can extend there then we will all be far better off. Uplifting, sharply observed, like an episode of Black Mirror that could make real positive social change. Thank you so much for making it.'

'So thought provoking about so many things; is compulsory treatment ever right? How could/should individuals/families/professionals/objective robots be involved in choices and decisions? When is a choice not a real choice? The nature of normal, the value of not-normal, etc, etc, etc.'

iii. **Powerful, emotional and empathic response. Felt seen & less alone.**

Many comments described audience members' powerful, emotional and empathic responses to watching the play. Several respondents also described how the play had given them reason to reflect, both personally and professionally. Some audience members went on to share that watching the play helped them to feel 'seen' and 'less alone'.

'The topics covered are raw (with me in tears in some parts!) but it was so well put together, and performed brilliantly, that they were dealt with sensitively and accurately.'

'The play had a visceral, emotional effect on me as I could identify with the vividly drawn characters, their desperation, courage, and unique approaches to living, as they grappled with situations that depicted real undercurrents in our individual and collective psyche.'

'It was so beautiful, the moments when he is describing how shapes and names taste, made me feel very seen & less alone.'

'It was really incredible seeing elements of myself represented onstage in ways different to how I usually see myself presented.'

'Great ..as a person with lived experience of voices (i was in denial because i knew it was not deemed normal ...again this subject is very moving in ur play)... got a lot from the play ..it made me cry smile etc .. im sooo glad the students will have a insight from it.'

iv. Want more people to see it.

Another common theme was a desire for the play to be seen by as wide an audience as possible, often with specific target audiences in mind, including student nurses and health professionals.

'Should be mandatory for all mental health professionals, student mental health nurses, trainee nursing associates; and an option for other healthcare students.'

'Have recommended to as many people working within mental health and psychology as possible.'

'I would recommend this to EVERYONE! I believe that this should go on a nationwide tour. I hope many people across the country will also get to see it.'

v. Criticism.

Very few audience members offered criticism, and in each case that it was offered, it was contextualised with praise for the overall experience. Three audience members who had lived experience of themes explored by the play advised that they would have appreciated more robust trigger warnings for some of the themes explored.

As a result of this feedback, I am working with experienced mental health professionals and lived experience experts to ensure we provide appropriate trigger/content warnings ahead of all future performances and screenings.

'I found the bits about mental health a little triggering (the hands in pants bit mainly because people under mental health section often do this for comfort/protection).'

'I think it might be worth providing a bit more of a content warning as I was quite triggered towards the end of the performance from Joseph's scream onwards.'

'I think it would be beneficial in the promotional materials and before the play to have a trigger warning for survivors of child sexual abuse.'

Other criticism included a few audience members who felt frustrated by the open/ambiguous ending, although there were also several audience members who commented on how much they liked the ending.

'It raised raw emotions. It raised conflicts. It was unpredictable. I'm not sure that it had a happy ending.'

*'Very good, but the ending felt not closed? I will have to make up my own mind :)
Really good play though, superb acting.'*

'I wanted a happy ending... I am so glad you didn't provide that! As much as I wanted it, the discomfort of not knowing heightened the impact! Wonderful!'

There was also one response that questioned the amount of strong language in the play. This will be considered carefully in further rewrites of the play.

'Though provoking, but was it necessary to have that amount of strong language? We found that quite off-putting.'

Q4: What would you like to say about the Q&A discussion?

Responses have been collated into the following themes:

i. Content of the play backed up by experts and explored in more depth. Encouraged reflection and professional development.

As with the previous question, the responses to this question were almost entirely positive. Many audience members reported that they appreciated the chance to hear from guest experts and other audience members, who praised the accuracy and sensitivity with which the play tackled the various themes, as well as adding further insight via their own professional and/or personal experience.

'Having people with lived experience of the subject matter reflecting on the play and the process helped to bring more depth to the issues raised in the play.'

'I don't have lived experience of the conditions discussed in the play, but it was great to hear members of the audience who did describing how they had connected with the characters.'

'Very interesting, helped me understand the care/control theme and answered lots of questions when the play finished. Very enjoyable session, so important.'

Audience members also commented that the discussion was thought provoking and encouraged reflection and professional development.

'Interesting, informative, talking to Pete (writer) and open-minded guest experts who could absolutely relate and understood concerns and provided us with useful tips, information (e.g. Power Threat Meaning Framework / PTMF, Open Dialog), and encouragement to be more open-minded, more empathetic, more holistic professionals.'

'Very informative and gave, in particular, the student mental health practitioners something to think about.'

ii. Saw the impact it had had on audience members. Valued being able to contribute.

Several audience members enjoyed hearing about the impact the play had had on other audience members.

'Amazing how many people it impacted who related to the themes of mental health. Feeling seen, heard, & represented.'

'As someone who doesn't have lived experience of the themes in the play, it was great to hear the positive feedback from audience members who did have lived experiences.'

'I did wonder if anyone would find the play upsetting - but everyone in the Q&A found a positive aspect.'

Others simply appreciated the chance to contribute in a safe and respectful discussion.

'Great platform to engage and have your voice heard everyone was respectful and attentive.'

iii. Needs more time / further development.

Another common theme that emerged in response to this question was that audiences felt the discussion needed to be longer and/or developed further.

'I appreciated the Q and A discussion. I felt that the time went by very fast and I would have loved more time--- there are so many things to say and reflect on about this play and it felt that we could barely scratch the surface. The idea of the Q and A is great and the guests could offer some extremely valuable discussions---I wonder if there is a way to scaffold the conversation to allow a deeper exploration of some of the really important messages, maybe some pre-prepared remarks, questions or topics which could be used to really get into things more.'

'Maybe it should be a separate event, so as it could have the time it deserves.'

'Really insightful, could have picked your mind for much longer on it.'

'Very enlightening, could have actually been longer!'

'Interesting but not easy to contribute in the time frame.'

iv. Criticism.

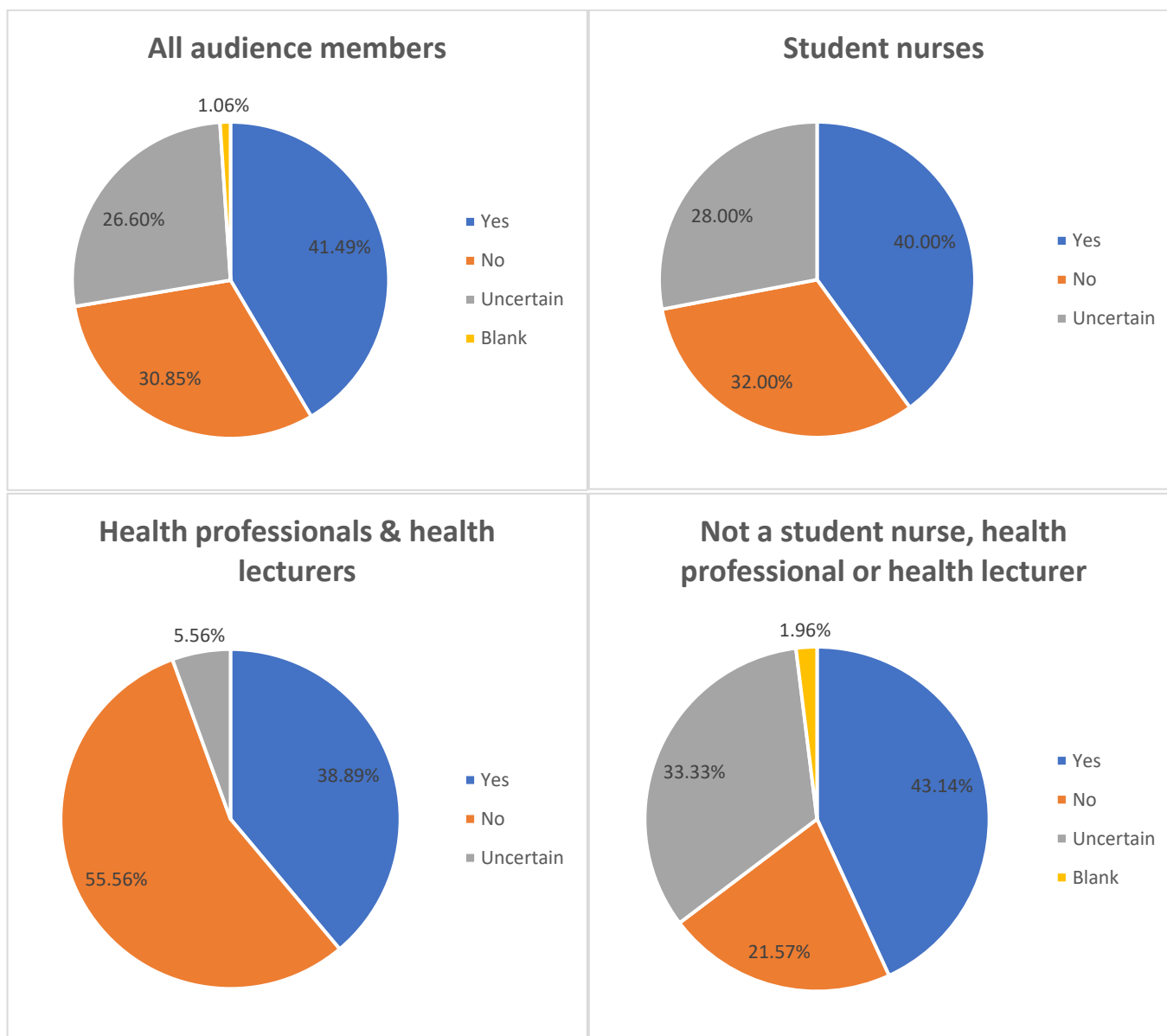
There were some critical comments that referred to the discussion following the online screening on Thursday 1st December. During this particular discussion, there were several contributions from people who had negative experiences of NHS mental health care and there was a written comment from an audience member in the chat box that claimed nurses had 'violence in their hands'.

'I enjoyed it at first but one of the comments about student nurses contributing to 'violence' was a bit extreme, the patient's wellbeing is paramount and should always be person-centred. Any other interventions are a last resort. It was good to hear from people with lived experience of the topics raised as well.' (Thu 1st Dec)

'It was interesting, I wanted to defend the nurses. Institutions like the NHS (and I am big supporter of NHS) can be difficult to navigate having put my head above the parapet many times and been shot at! It is not easy to be heard! We need to start with training providers to plant the seed of personal choice and advocating the need to put the person at the centre of any intervention, a choice! Targets create extreme pressure to tick a box as opposed to 'being with' someone in distress!' (Thu 1st Dec)

The comment about violence here is of real interest as it suggests an opening for learning about the reality of concepts such as epistemic violence and the limitations of narratives of last resort. Ideally, such learning can be accomplished in a supportive environment where student nurses do not feel blamed for systemic issues and the goal of producing critically aware nurses is achieved. To support this outcome, care must be taken in future post-show conversations to ensure student nurses feel supported and empowered when systemic issues are raised, encouraging them to offer their own thoughts and questions as a vital part of any discussion around these themes.

Q5: Have your views changed at all after attending this event?



It was encouraging that the play and post-show discussions were able to challenge and even change a large proportion of people's views.

For the vast majority of audience members who answered 'no' or 'uncertain' to this question, they went on to contextualise this by commenting (see responses to question 6) that they already had strong beliefs around the themes explored within the play and that watching it had confirmed or even strengthened their views.

Q6: If your views have changed, how have they changed?

Responses have been collated into the following themes:

i. Provoked questioning of existing systems and processes. Highlighted need to listen to service users and provide genuine informed choice of treatment.

The most common theme to emerge from responses to this question, particularly from student nurses, health professionals and health lecturers, was that the play had provoked questioning of existing systems and processes within mental health services. Many also stated that the play had highlighted potential dangers and vulnerabilities. In terms of the play highlighting potential improvements to working practices, many audience members said that the play had highlighted

the need to listen to and include service users in conversations about their care, and to provide them with genuine choice.

'Makes you question the nursing process as a whole.'

'How easy it is to coerce a vulnerable person suffering from mental health issues.'

'It just highlighted to me the need for understanding of individual needs when treating someone and a client centred approach to treatment rather than diagnosis driven, one-size-fits-all paternalistic model.'

'How the persons view of health is listened to and acknowledged, also how people are included in their care & how this advocated to them.'

ii. Insight into human experience. Highlighted the importance of individuality. Inspired further learning and reflection.

Another common theme was that audience members felt they had been given an insight into human experiences (or interpretations of these experiences) that they had previously been unfamiliar with. Many also commented specifically on a new or improved belief in the importance of individuality, and the questioning of what it means to be 'normal'. Linked to this new insight, several audience members went on to say that they would reflect on their own beliefs and behaviours and seek out further learning around the themes explored.

'Makes me want to completely embrace every individualistic feature about myself to the fullest potential. I will limit saying 'I wish I didn't feel like this again'. I want to be less judgmental towards others.'

'It provided me with an insight into hearing voices I have never been aware of before.'

'I have a new appreciation for mental health topics I previously misunderstood and underappreciated. The things that make you different, the things you think are weird, the things you hide, are the things that people love about you.'

'This play has made me keen to increase my understanding of neurodivergence, so that I am better equipped to make all people feel validated and welcome within the spaces in which I work.'

iii. Reignited / strengthened my beliefs.

As mentioned above in relation to question 5 ('Have your views changed at all after attending this event?'), the majority of people who answered 'no' or 'uncertain' to this question, went on to clarify in this section that their views had been confirmed, reignited or strengthened.

'My views haven't changed rather ignited to continue to look at the complexities of humans and ensure we maintain best interests and encourage choice, not simply the illusion of it but genuine choice of care.'

'My views have not so much changed as been reinforced. This was such a powerful message (about mental health & our duties to each other), so gracefully imparted through writing & performance, that it CANNOT be mistaken as anything else but learning (education) of the highest impact, for performers and 3rd parties looking in.'

'My views haven't changed as someone who takes a critical approach to mental health and psychiatry already, however I was really excited to see how our student nurses were clearly affected by the themes in this play.'

'My views remain the same, I just want to shout louder!'

iv. I no longer feel so alone.

As in answers to previous questions, some audience members described how the play had helped them feel less alone.

'I no longer feel so alone in who I am and my understanding of how truly vast the spectrum of self is has widened greatly. I am very grateful for this experience, thank you.'

Q7: Imagine you're on our marketing team, how would you convince people to come and see the play?

Although the main intent of this question was to gain ideas on how to market the play more effectively, the answers provided gave some valuable insight into who the audience members felt the play would appeal to, as well as potential further uses for the play.

Responses have been collated into the following themes:

i. Promote to student nurses & health professionals as a learning resource. Use for wider awareness training.

One of the strongest themes in response to this question (especially from student nurses, health professionals and health lecturers) was the recommendation to promote this as a pedagogical tool throughout the health sector.

There were also several responses that suggested the play should be used for wider awareness training, especially for people who work with young people.

'Needs to be integrated with training and continuing professional development of those within the NHS. More specifically the mental health setting. That would be in addition to the routine theatre market.'

'Coming into lectures and making more student nurses aware of the play. This also could be mandatory for student nursings covering ethics modules also a good insight to mental health, and everyone should have some knowledge of mental health as a child nurse, adult nurse not just for the mental health nurses. Thank you it was an amazing play.'

'The NHS are promoting "Awareness" courses for so many things this has to be a first port of call.'

'Marketing it to everyone- not just health professionals, it's a really great piece of theatre accessible to everyone. It raises awareness of being compassionate towards people who are neurodivergent and also touches on more universal themes such as loneliness, self-image, and the importance of human contact. Reaching out to professionals in education may also be valuable particularly those working in special needs sectors. It's a beautiful dystopian human story that everyone should be aware of. Reminiscent of the curious incident of the dog in the night time, studying how they marketed that show may influence how to engage more everyday people.'

'Targeting people that work with young people in services - youth theatre workers / student support groups. Teachers. Anyone that works with vulnerable people need to see this.'

'I would attend schools, from years 9 and onwards.'

ii. Wider social impact. Positive descriptions of the play and its strengths.

In addition to being used to support the training of health professionals and as an awareness raising tool, many people commented on the potential for the play to have a far wider social impact. This was often stated alongside their positive descriptions/synopses of the play and its perceived strengths.

'Thought-provoking and disturbing, in a good way. The play has potential to impact hearts and minds, and so to make a difference for individuals, families and society as a whole. Relevant to us all...'

'This play pulls the veil back on the myth and potential tyranny of 'normal' and shines a light on the damage done, and treasures lost!! when a society's value in it goes astray. It is an important challenge to ourselves and our society, but also a heart-warming reminder of the value of our humanity and an invitation to see the value in our weird selves.'

'A poignant & gripping story that will move you and make you think about the society we live in and where it might be heading.'

'Unique experience. Nothing like any play I have watched. It will make you laugh cry and leave feeling full of joy!'

Q8: Anything else you'd like to say before we let you go?

Responses have been collated into the following themes:

i. Less alone - praise - thankyou - impact on audience - wide appeal.

Many of these themes came up in response to previous questions, but they were present in the majority of responses to this final question.

'Thank you so much, I really appreciate having the opportunity to see this show and feel that it's so generous to be able to attend for free. I absolutely loved the show and did get really emotional at times. I thought the characters were really well developed. I loved the story behind the idea of the show as well. As a student nurse I feel that I do think about things from another point of view. However, as someone who is on the autism spectrum and struggles with anxiety it was great to relate to some of the themes and why living with these experiences makes us who we are. Thank you so much, I really hope more people continue to see this show.'

'Thank you for bringing this to peoples attention. It made me feel less alone in the issues I've had and demonstrated it in such a beautiful way.'

'It was amazing from start to finish. I went through every emotion possible.'

'This is a truly brilliant piece of work. And clearly has had a profound impact on some of the audience members.'

ii. More people need to see it.

A large proportion of responses to this question included hopes that the play reaches a much larger audience.

'I am so glad I saw this play, on so many levels. I would also like to share this play with my fellow trainees--I'm wondering if there is a way that people will be able to see it in the future.'

'Should compulsory part of training, as it is a creative form of exposure to other fields of practice for STNs.'

'I was blown away. I'd love to know how the research goes, and if there is another tour. I'd bring my friends and stay for Q&A.'

'I really hope you can take the play on a national tour - this play needs to be seen by as many people as possible. Good luck!'

'I wish you all the success you so deserve with The Possibility of Colour.

A question asked during the Q and A was,

Will there be a sequel?

Yes please!'

Appendix

This section contains a wider selection of audience responses to the questions requiring a narrative response, broken down into responses from the following four distinct groups:

- A. Student nurses.
- B. Health professionals & Health lecturers.
- C. Audience members who identified as having lived experience of the themes explored.
- D. All other audience members.

Q3: What would you like to say about the play?

i. Praise of quality, accuracy, sensitivity, complexity & sincerity.

Student nurses:

'Absolutely amazing.'

'Absolutely fantastic.'

'Phenomenal acting.'

'Absolutely brilliant. Thought-provoking and deeply insightful. Not just a black-and-white understanding of the difficulty but shows the complexity of the issues and struggles.'

'Sensitive and accurate.'

'Successfully portrayed how it would feel to be a patient being detained under the mental health act and having their rights stripped from them.'

Health professionals & health lecturers:

'Thank you for such a wonderful play.'

'Thought provoking, poignant, engrossing & funny!'

'Incredibly powerful and captivating.'

'Felt engaged with all the characters.'

'Beautifully acted and uncomfortable watching at times (and so theatre should be).'

'Totally gripping.'

'Thank you for a truly amazing and powerful experience.'

'I worried I would not engage in an online session as I would a live performance but I was hooked.'

'Alarmingly close to reality.'

'Wonderfully expansive strikingly accurate surreal story based around a very honest and humble core real experience.'

'The themes around social control and the coercion aspects of the Vigil system were pertinent and hopefully not scarily prophetic.'

'Themes around automated responses limiting feedback and choice were scarily familiar.'

'Lived experiences of the characters was well-done and made good points around lived experience - it isn't always a complete negative to hear voices.'

'Thank you so much for this play, I think it is very important and raises questions and issues that are essential for us to be thinking about- as individuals and as a society.'

'As a play, in a theatre, it was a superb performance by all the key players (x3) with recordings / lights / production to engage & draw in the theatre-goer.'

Audience members who identified as having lived experience of the themes explored:

'It was absolutely phenomenal.'

'I will start by saying it is the first play that I have ever attended and a brilliant one at that.'

'It was the utter sincerity of every moment that really bowled me over to be honest.'

'Absolutely fantastic, subject matters raised were very important and made me very emotional.'

'The stories told were grounded in past and contemporary realities, and contain indications about what would help us avoid much of the misery that we currently experience.'

'It was brilliant - nuanced, insightful and thought-provoking. Great writing, obviously very well researched, and the performance was stunning - a marvelous set of actors, beautifully directed. Top marks from me.'

'The way that Joseph's autism spectrum condition was portrayed was amazing. I loved the visual and auditory representation of his talents. I thought the way in which Joseph's sister's psychosis was represented was so powerful, how it was weaved into the dialogue. It has stayed with me how she referred to the voices by name and as friends, as part of who she is.'

'Very clever and obviously well researched.'

All other audience members:

'I didn't know what to expect and was completely blown away right from the start!'

'Brilliant. And funny too in places!'

'The play was brilliant! The play's nuanced exploration of neurodiversity was incredible and it was great to see neurodiversity being celebrated.'

'It was amazing! Really brought home what autism is all about.'

'Not knowing quite what to expect from the play, I was engrossed from the opening scene to the final moment. It was well written, fantastically acted and wonderfully produced. I hope it gets the recognition it deserves.'

'I would recommend this to EVERYONE! I believe that this should go on a nationwide tour. It was truly terrifying, educational and entertaining. Blew my mind!'

'A superbly written and captivatingly performed play.'

'A truly incredible production. The story was gripping and compelling. The acting was on point. The set and effects brought beautiful layers to the piece. It's [difficult] to put it all into words as everything about the play was excellent and it far exceeded my expectations. I hope many people across the country will also get to see it - the whole room was spellbound and we all learned so much and were rooting for the characters.'

ii. Challenges highlighted, questions provoked. Creative and novel way to learn.

Student nurses:

'It highlighted some important challenges to our existing mental health system around diagnosis, hospitalisation and patient autonomy. It was a powerful portrayal about how technology and the automation of services pose serious threats to patient autonomy and least restrictive practices. It was also really effective at portraying how social conventions can lead to the misinterpretation of what mental illness is and how professionals interact with people presenting with challenging behaviour.'

'Relatable and a great teaching moment.'

'Thought provoking and had a lasting learning effect, often the most significant learning is from something that invokes strong emotions.'

'Raises questions around current and future treatments.'

'Creative way to see a side of patients which can be difficult to understand in practice.'

'It opened my eyes to experiences people face and the decisions often made for them rather than with them.'

'Demonstrates the need for compassion, empathy and individual respect in healthcare.'

'Successfully portrayed how it would feel to be a patient being detained under the mental health act and having their rights stripped from them.'

Health professionals & health lecturers:

'The potential for AI to have devastating effects was made clear.'

'Powerful messages about neurodiversity.'

'Thought-provoking.'

'The themes around social control and the coercion aspects of the Vigil system were pertinent and hopefully not scarily prophetic.'

'Themes around automated responses limiting feedback and choice were scarily familiar.'

'Themes around experience and authenticity were well-developed.'

'Is being happy 'better' than experiencing the bad as well as the good?'

'Interesting to hear the described experiences of synaesthesia and voice-hearing.'

'I liked the way the voice-hearing was done on stage.'

'A great medium to start much needed debates around power, choice and what's deemed as "acceptable" and what is essentially medicalised and forcefully "treated".'

'Loved the multiple layers and themes around social control and coercion.'

'An excellent educational tool for students & window into mental health. Real life experience - delivered in a safe environment.'

'The desire to use this production in the context of training medical professionals is brilliant. I am involved in teaching medical students and, although the concepts of enabling patient choice/involvement in treatment pathways and ideas around how we define disability and what is 'normal' are emphasised, these are generally presented in ways that are very dry and theoretical - using a production such as this would have a much greater impact.'

'The way that Joseph's autism spectrum condition was portrayed was amazing.'

'I thought the way in which Joseph's sister's psychosis was represented was so powerful, how it was weaved into the dialogue. It has stayed with me how she referred to the voices by name and as friends, as part of who she is.'

'Thank you so much for this play, I think it is very important and raises questions and issues that are essential for us to be thinking about- as individuals and as a society.'

'Do we choose a future where there is a possibility to take away all human emotional pain and suffering and in doing so deprive ourselves of beautiful creative minds or do we choose a future where we learn about our understandable human responses to painful life events and use them as opportunities for growth and shared compassionate responses?'

'What are services actually trying to do? who are they serving?'

'How the system currently exists fails a great number of people and I experienced this play as an invitation to do better and work towards service provision that goes about things differently.'

'One thing that I found particularly excellent was the dilemmas/binds presented for both Joseph (consent to your sisters treatment or be responsible for her care) and Aisling (either you are well enough to work or are sick enough to need compulsory treatment). What is harrowing is that despite this being presented as a dystopian future of healthcare system at first glance, these are the kinds of binds people can essentially find themselves wrestling with within our current system. And it really carefully and accurately lays out these types of dilemmas and the difficulty of individuals faced with sections, depots, benefit systems, and also the position of family members who may be wishing to do right by family members and yet also experiencing caring for relatives as a challenging burden.'

'As a means to educating, beyond the theatre, the content & performance I think could have massive impact on exactly the people this "overall package" is aimed at: students / service users / academic staff / nursing staff - all disciplines.'

Audience members who identified as having lived experience of the themes explored:

'Very though provoking and resonated personally with my own unspoken questions about difference in perception.'

'I absolutely adored the questioning around normality and what this means in the 21st century. So completely relevant to our 'there's a pill for everything' approach rather than considering holistic, pastoral care. I have struggled with my mental health previously and but I would not change a thing because I truly believe I feel the full wrath of my emotions and I love the ability to be able to do that. This play reaffirms this. It is such a special thing to be and to feel differently. How on earth can we say there is one standardized way. The more you think about it the more absurd it is. It really made me think about how we judge others for their differences - how can we judge different people? We will never have the capacity to be another person so the only thing we should be offering them is love and support.'

'It is exciting and really comforting to see mental health being discussed more & more. Using theatre to highlight issues and bring awareness is an excellent way to engage on a new level. It's also reaching a younger, more impressionable audience. As an autistic person, too, it was much more inviting and easier to stay focused. It was a sensory experience. Much better than an ordinary classroom lecture.'

'The play challenges us to think about our whole approach to understanding and responding to different states of mind and being in an accessible and arresting manner. Do we choose a

future where there is a possibility to take away all human emotional pain and suffering and in doing so deprive ourselves of beautiful creative minds or do we choose a future where we learn about our understandable human responses to painful life events and use them as opportunities for growth and shared compassionate responses.'

'Thank you so much for this play, I think it is very important and raises questions and issues that are essential for us to be thinking about- as individuals and as a society.'

'Honestly this is such a difficult question to answer because the more I think about the play the more little things I spot to mull over.'

'I'm so glad medical professions were encouraged to attend, because if heartfelt curiosity can extend there then we will all be far better off. Uplifting, sharply observed, like an episode of Black Mirror that could make real positive social change. Thank you so much for making it.'

All other audience members:

'As someone with limited knowledge of the lived experiences of the characters, I learnt so much from the play and found the theme of medical consent to be very thought-provoking. I also appreciated that whilst being dystopian the events of the play seemed highly plausible; for example, with the reference to budget cuts for support groups and the privatisation of healthcare. I am passionate about the use of theatre/drama to raise awareness of marginalised experiences and social justice issues - this play was a brilliant example of the power of theatre to change hearts and minds!'

'I left the theatre with new knowledge and fresh awareness of some stigmatised and largely misunderstood mental health topics. It's also a sharp critique of some of the features of contemporary life, where AI and state intervention creep ever more into normality alongside the pressure to adhere to a collectively acceptable version of our own internal monologue.'

'So thought provoking about so many things; is compulsory treatment ever right? How could/should individuals/families/professionals/objective robots be involved in choices and decisions? When is a choice not a real choice? The nature of normal, the value of not-normal, etc, etc, etc.'

iii. Powerful, emotional and empathic response. Felt seen & less alone.

Student nurses:

'Very powerful.'

'The topics covered are raw (with me in tears in some parts!) but it was so well put together, and performed brilliantly, that they were dealt with sensitively and accurately.'

'It made me feel the emotions that the patient would feel.'

'Often the most significant learning is from something that invokes strong emotions.'

Health professionals & health lecturers:

'Incredibly powerful and captivating.'

'Powerful messages about neurodiversity.'

'Disturbing.'

'I thought the way in which Joseph's sister's psychosis was represented was so powerful, how it was weaved into the dialogue. It has stayed with me how she referred to the voices by name and as friends, as part of who she is.'

'Thank you for a truly amazing and powerful experience.'

'Challenging.'

'It did feel very uncomfortable at times , powerless as an onlooker, but that was what made it so engaging!'

'Reflected as an individual and as a health professional.'

'It works at so many different levels, resonating with me as a parent, teacher, research supervisor, but also as ME!! Now you show it to me, I can see me in there.'

Audience members who identified as having lived experience of the themes explored:

'Subject matters raised were very important and made me very emotional.'

'For me it felt like a deep exploration of the dynamics of power, culture, difference and pain in our society. The play had a visceral, emotional effect on me as I could identify with the vividly drawn characters, their desperation, courage, and unique approaches to living, as they grappled with situations that depicted real undercurrents in our individual and collective psyche. It seemed that powerful inner experiences were re-lived by the actors, expressed in such a way that the audience would engage with those experiences too.'

'It was the utter sincerity of every moment that really bowled me over to be honest. As a highly sensitive, Queer, Neurodivergent person, I'm very used to feeling what I would call insincerity quite regularly. In this way it was a breath of fresh air... It was so beautiful, the moments when he is describing how shapes and names taste, made me feel very seen & less alone. I think also just the heartfelt curiosity to explore how different people think/feel & see the world (rather than simply dismiss divergence from the assumed 'norms' as weird or broken). This sincerity was so tangible throughout.'

'It was really incredible seeing elements of myself represented onstage in ways different to how I usually see myself presented.'

'I felt a lot of connection to Joseph, especially with the confusion around why anyone would want him to change, but then himself also wanting to seem 'normal' and 'lovable'.'

'Very clever and obviously well researched. I related to it as a survivor of child sexual abuse who ended up in the MH system.'

'Great ..as a person with lived experience of voices (i was in denial because i knew it was not deemed normal ...again this subject is very moving in ur play)... got a lot from the play ..it made me cry smile etc .. im sooo glad the students will have a insight from it.'

All other audience members:

'It was truly terrifying, educational and entertaining. Blew my mind!'

'Deeply moving.'

'Very powerful. Frighteningly plausible as others mentioned, and three very believable characters, all of whom you could empathise with.'

iv. Want more people to see it.**Student nurses:**

'Should be mandatory for all mental health professionals, student mental health nurses, trainee nursing associates; and an option for other healthcare students.'

Health professionals & health lecturers:

'I will forward details to people I know.'

'Have recommended to as many people working within mental health and psychology as possible.'

Audience members who identified as having lived experience of the themes explored:

'I have recommend it to friends and I'll definitely come see it again.'

All other audience members:

'I would recommend this to EVERYONE! I believe that this should go on a nationwide tour.'

'I hope many people across the country will also get to see it.'

v. Criticism.**Student nurses:**

'It was very intriguing however the ending had me confused and it was a cliff hanger.'

'It raised raw emotions. It raised conflicts. It was unpredictable. I'm not sure that it had a happy ending.'

'Very good, but the ending felt not closed? I will have to make up my own mind :) Really good play though, superb acting.'

Health professionals & health lecturers:

'Though provoking, but was it necessary to have that amount of strong language? We found that quite off-putting.'

Audience members who identified as having lived experience of the themes explored:

'I found the bits about mental health a little triggering (the hands in pants bit mainly because people under mental health section often do this for comfort/protection).'

'I think it might be worth providing a bit more of a content warning as I was quite triggered towards the end of the performance from Joseph's scream onwards.'

'I think it would be beneficial in the promotional materials and before the play to have a trigger warning for survivors of child sexual abuse.'

Q4: What would you like to say about the Q&A discussion?**i. Content of the play backed up by experts and explored in more depth. Encouraged reflection and professional development.****Student nurses:**

'It was great to be able to ask questions and learn more about the idea behind the play.'

'It was very thought provoking, interesting and knowledgeable.'

'It was interesting finding out that the people who came to the q&a actually suffered with some of the things portrayed in the play.'

'Connected dots for me allowing me to understand the play and the background of the characters.'

'Interesting, informative, talking to Pete (writer) and open-minded guest experts who could absolutely relate and understood concerns and provided us with useful tips, information (e.g. Power Threat Meaning Framework / PTMF, Open Dialog), and encouragement to be more open-minded, more empathetic, more holistic professionals.'

'It was interesting getting to pick the minds of those who had experiences related to the play.'

Health professionals & health lecturers:

'Having people with lived experience of the subject matter reflecting on the play and the process helped to bring more depth to the issues raised in the play.'

'I appreciated the time it gave me to digest what I had seen and really think about what the play was saying and hear how it resonated with people in different ways.'

'It was amazing to hear of the huge amount of time, energy and research that went into making this play (looking at the website afterwards made me appreciate the size of the team involved); this was reflected in the end product being so believable and engaging. I don't have lived experience of the conditions discussed in the play, but it was great to hear members of the audience who did describing how they had connected with the characters. Learning of Pete's very personal connection with the story line and his own performance in the play was brilliant.'

'It was really interesting to find out more around the inspiration for the play and the work that went into researching this.'

Audience members who identified as having lived experience of the themes explored:

'Very insightful and a wonderful touch, always nice to know who and what went into the play behind the scenes.'

'Superb. So brilliant to hear so many different point of views from professionals in the industry. Really interesting to hear about how long this play took to refine and develop but not surprised it took so long because it is of such a high standard. I respect the writer so much because I think there is such vulnerability in being open to change, and a humbleness which comes with doing so. A collaborative approach has worked so tremendously in this execution. It's like you took the best ingredient in every supermarket and blitzed it together in a nutribullet to make one fine smoothie.'

'Absolutely fascinating!! I never knew there were 80 variants of Synesthesia!? I never knew that everyone has it as a baby until neuron's are cut back during development!? It made me very very grateful to have such a discerning neuron gardener, that my synesthesia was allowed to remain... Learning that they had literally made a synesthites visual experience of music come to life on the stage made me cry... This play genuinely needs to be given a bigger budget and toured everywhere. The greater our understanding and inclusion of spectrum/divergent people, the greater the benefit to our whole human community.'

'Very informative and gave, in particular, the student mental health practitioners something to think about.'

All other audience members:

'In particular, I found it fascinating that the projections were created to visualise the experience of synaesthesia.'

'Very interesting, helped me understand the care/control theme and answered lots of questions when the play finished. Very enjoyable session, so important.'

'This was actually really engaging and informative.'

'Grateful for the opportunity to listen to experts and get a deeper understanding of the play. All 3 speakers were excellent.'

ii. Saw the impact it had had on audience members. Valued being able to contribute.

Audience members who identified as having lived experience of the themes explored:

'Fascinating discussion and I loved seeing collaboration with the immediate moment potentially impacting on audience members going forwards.'

'Encouraging to hear that mental health nurses support the use of creative story telling as a form of education/recovering.'

'It was nice to see Mental Health professionals being open and forward with the audiences questions. As well as the actors and writer himself being able to get involved and share personal experiences.'

'Great platform to engage and have your voice heard everyone was respectful and attentive'

'Amazing how many people it impacted who related to the themes of mental health. Feeling seen, heard, & represented.'

All other audience members:

'As someone who doesn't have lived experience of the themes in the play, it was great to hear the positive feedback from audience members who did have lived experiences.'

'It was clear how well issues were responded to from an audience that wasn't primarily a theatre audience. It was really nice to see healthcare professionals engaging so completely in a setting that often isn't geared towards them.'

'I did wonder if anyone would find the play upsetting - but everyone in the Q&A found a positive aspect.'

iii. Needs more time / further development.

Student nurses:

'Wish there was more time.'

Health professionals & health lecturers:

'I appreciated the Q and A discussion. I felt that the time went by very fast and I would have loved more time--- there are so many things to say and reflect on about this play and it felt that we could barely scratch the surface. The idea of the Q and A is great and the guests could offer some extremely valuable discussions---I wonder if there is a way to scaffold the conversation to allow a deeper exploration of some of the really important messages, maybe some pre-prepared remarks, questions or topics which could be used to really get into things more.'

Audience members who identified as having lived experience of the themes explored:

'Maybe it should be a separate event, so as it could have the time it deserves.'

'Really insightful, could have picked your mind for much longer on it.'

All other audience members:

'Very enlightening, could have actually been longer!'

'Interesting but not easy to contribute in the time frame.'

iv. Criticism.

Student nurses:

'I enjoyed it at first but one of the comments about student nurses contributing to 'violence' was a bit extreme, the patient's wellbeing is paramount and should always be person-centred. Any other interventions are a last resort. It was good to hear from people with lived experience of the topics raised as well.' (Thu 1st Dec)

Health professionals & health lecturers:

'It was interesting, I wanted to defend the nurses. Institutions like the NHS (and I am big supporter of NHS) can be difficult to navigate having put my head above the parapet many times and been shot at! It is not easy to be heard! We need to start with training providers to plant the seed of personal choice and advocating the need to put the person at the centre of any intervention, a choice! Targets create extreme pressure to tick a box as opposed to 'being with' someone in distress!' (Thu 1st Dec)

Q6: If your views have changed, how have they changed?**i. Provoked questioning of existing systems and processes. Highlighted need to listen to service users and provide genuine informed choice of treatment.****Student nurses:**

'I work within mental health and learning disability services and I think it's very easy to slip into the way of thinking that 'we are doing what's best we know best'.'

'It just highlighted to me the need for understanding of individual needs when treating someone and a client centred approach to treatment rather than diagnosis driven, one-size-fits- all paternalistic model.'

'In the sense that everyone has a right to make informed choices.'

'The play made me realise that more alternative methods should be approved to be able to tailor care to the person.'

'Makes you question the nursing process as a whole.'

'People should not be forced to change who they are (so long as they are safe in terms of themselves and others).'

Health professionals & health lecturers:

'How easy it is to coerce a vulnerable person suffering from mental health issues.'

'Around the use of medication and how this can so often be used like a sledge hammer to tap in a drawing pin.... This then can lead to gaping holes and suppression of an individual's personality.'

'Not just treating all mental illness as pathological.'

'How the persons view of health is listened to and acknowledged, also how people are included in their care & how this advocated to them.'

Audience members who identified as having lived experience of the themes explored:

'The play makes a powerful contribution to the important debate around the humanity in healthcare informing improvements in ethical treatment and care.'

ii. Insight into human experience. Highlighted the power of individuality. Inspired further learning and reflection.**Student Nurses:**

'It provided me with an insight into hearing voices I have never been aware of before.'

'Understanding of what it can be like to have a mental health condition and how it is influenced by the external environment.'

'I have worked with people that have found comfort in hearing voices before but it definitely made me think more about perceived normality.'

'It definitely made me think about how 'normal' means so many different things depending on the person and mental health is sometimes someone's 'normal' and that is ok.'

Health professionals & health lecturers:

'Helped think about how I support learners.'

Audience members who identified as having lived experience of the themes explored:

'Makes me want to completely embrace every individualistic feature about myself to the fullest potential. I will limit saying 'I wish I didn't feel like this again'. I want to be less judgmental towards others.'

'I hadn't really thought about the value of not being "normal" in much depth.'

'Our flaws are part of life and they make every single one of us unique & interesting. Like chapters of a book.'

'It's also shown me how other people live and view their lives, and how one option can produce very very different, but almost equally strong reactions from them. And how what is normal for some people is not seen like that by society in general, but it is a beautiful thing and has value, even if it's only appreciated by that person and no one else.'

'I would be pro implant. If something makes you happy and is reversible then why not go for it.'

All other audience members:

'This play has made me keen to increase my understanding of neurodivergence, so that I am better equipped to make all people feel validated and welcome within the spaces in which I work.'

'Made me understand more what 'being normal' is all about. Plus the idea that words had tastes was fabulous.'

'I have a new appreciation for mental health topics I previously misunderstood and underappreciated. The things that make you different, the things you think are weird, the things you hide, are the things that people love about you.'

'I have better understanding why we are unique as an individual and our (illegible) quiriness makes us special. It's also nice to reflect on why people who have internal disturbances do certain things that don't make sense. It makes a lot of sense now.'

'About mental health? About happiness? I'm thinking about it!'

iii. Reignited / strengthened my beliefs.**Student Nurses:**

'Watching the play has reignited a passion I entered the job with and reminded me of the balance needed between we know best and the person knows best.'

'The Possibility of Colour resonates with my views and core beliefs about how all individuals and their conditions are unique, and "normal" is a very broad spectrum.'

'I feel this confirmed some of my views.'

'My views haven't changed rather ignited to continue to look at the complexities of humans and ensure we maintain best interests and encourage choice, not simply the illusion of it but genuine choice of care.'

Health professionals & health lecturers:

'I would say a great deal of my views have been reaffirmed and strengthened.'

'My views have not so much changed as been reinforced. This was such a powerful message (about mental health & our duties to each other), so gracefully imparted through writing & performance, that it CANNOT be mistaken as anything else but learning (education) of the highest impact, for performers and 3rd parties looking in.'

'I suppose I came along to this to be part of something that I feel passionate about already. So it helped to confirm some of my biases !! (Thanks ~) There is a societal need for change in our approach to human distress. We base our responses within a health paradigm that from the outset takes an approach of pathologising, needing to fix or get rid of things we call symptoms which may hold important messages about growth and change. I believe that change will only come when we find ways to respond within our communities which is outside of a health paradigm.'

'My views remain the same, I just want to shout louder! I am not against medication, just against the idea they provide a perfect antidote to a difficult life! Creativity is often borne out of suffering! The play illustrated that beautifully.'

'I would say the event has reinforced, rather than changed, my views with regard to the importance of recognising/accepting neurodiversity and working to increase understanding (at both biological/medical and societal levels) of mental health conditions. Consideration of individual choice in relation to health and treatment of mental and physical conditions is also something that I feel is of great importance.'

'My views haven't changed as someone who takes a critical approach to mental health and psychiatry already, however I was really excited to see how our student nurses were clearly affected by the themes in this play.'

Audience members who identified as having lived experience of the themes explored:

'It's made me consider things I wouldn't have before but I'd say I broadly had similar views on mental health and things that make people different, but I'd never explored some of them to the extent the play forced me to.'

All other audience members:

'Not really changed, but renewed determination to challenge perceptions and prejudice, and promote discussion wherever possible.'

'I always believed mental health to be very important and a real touching subject, while also being educated to the masses. This piece perfectly does that.'

iv. I no longer feel so alone.**Audience members who identified as having lived experience of the themes explored:**

'I no longer feel so alone in who I am and my understanding of how truly vast the spectrum of self is has widened greatly. I am very grateful for this experience, thank you.'

Q7: Imagine you're on our marketing team, how would you convince people to come and see the play?

i. Promote to student nurses & health professionals as a learning resource. Use for wider awareness training.

Student Nurses:

'As an adult nursing student, this gave me a brilliant exposure to mental health, which I feel will help me to become a more empathetic healthcare professional in the future, with the understanding of mental health conditions and their impacts.'

'Coming into lectures and making more student nurses aware of the play, This also could be mandatory for student nursings covering ethics modules also a good insight to mental health, and everyone should have some knowledge of mental health as a child nurse, adult nurse not just for the mental health nurses. Thank you it was an amazing play.'

'I heard about the play through one of my university lecturers, and this could be done to all universities. Maybe even a talk about what the play is about from Pete and then a link given to the universities if they would like to see it afterwards they can choose to pay to do so?'

'I would recommend the play aiming for people to be open minded to future alternatives in medication. It's interesting to know what the future could hold for mental health awareness due to the rise in admissions.'

'I would certainly market it towards healthcare professionals as an example of the dangers of using the medical model of disease over a holistic view of the person and what works for them.'

'Great relatable teaching moments without realising you're learning.'

Health professionals & health lecturers:

'Needs to be integrated with training and continuing professional development of those within the NHS. More specifically the mental health setting. That would be in addition to the routine theatre market.'

'The NHS are promoting "Awareness" courses for so many things this has to be a first port of call.'

Audience members who identified as having lived experience of the themes explored:

'Targeting people that work with young people in services - youth theatre workers / student support groups. Teachers. Anyone that works with vulnerable people need to see this.'

'I would attend schools, from years 9 and onwards.'

All other audience members:

'Marketing it to everyone- not just health professionals, it's a really great piece of theatre accessible to everyone. It raises awareness of being compassionate towards people who are neurodivergent and also touches on more universal themes such as loneliness, self-image, and the importance of human contact. Reaching out to professionals in education may also be valuable particularly those working in special needs sectors. It's a beautiful dystopian human story that everyone should be aware of. Reminiscent of the curious incident of the

dog in the night time, studying how they marketed that show may influence how to engage more everyday people.'

ii. Wider social impact. Positive descriptions of the play and its strengths.

Student Nurses:

'By focusing on the positiveness of the play.'

Health professionals & health lecturers:

'This amazing and insightful production will make you think hard about your attitudes to 'what is normal' and who has the right to make decisions about an individual's mental health care'

'To watch and experience how vulnerable/marginalised people with complexed M.H issues can be.'

'Having some form of video clips and the student VOX to show how influential the show has been.'

'What caught my eye on Eventbrite was the beautiful image, the interesting title, and the attention grabbing blurb. All of those elements together really work well. There was a sense of mystery as well - no images of the set, etc - I had no idea what to expect. Keep doing that!'

'This play pulls the veil back on the myth and potential tyranny of 'normal' and shines a light on the damage done, and treasures lost!! when a society's value in it goes astray. It is an important challenge to ourselves and our society, but also a heart-warming reminder of the value of our humanity and an invitation to see the value in our weird selves.'

'It raises questions that are relevant to everyone in one way or another, it is very engaging and the actors really draw the audience in and take them on a journey of emotions forcing them to ask sometimes uncomfortable questions about the way we treat people with certain differences that are medicalised and deemed as a problem by others, even if not experienced as such by the individual.'

'A must see! Creative, engaging and extremely thought provoking!'

Audience members who identified as having lived experience of the themes explored:

'It addresses modern dilemmas - you will experience joy, sorrow, and probably rage.'

'This play will change your whole perception of everything.'

'A journey for everyone, regardless of your background. Something for everyone to connect with.'

'As a member of the general public and someone who has been through the 'system' on more than one occasion. The question I would ask is 'have you or someone you know struggled with the mental health system? Has someone tried to make you 'normal' or fix you, rather than understand you? If yes then this is the play for you.'

'For powerful insight into human nature, and acquaintance with undercurrents that shape our future, come and see this play!'

'A 2 hour emotional roller-coaster - laughter, awkwardness, desperation, self-hatred, hope, connectedness, pain, terror, joy, playfulness and grief. A display of our deeply human vulnerability and our longing to belong and how these things clash against the society and systems we are creating.'

'A poignant & gripping story that will move you and make you think about the society we live in and where it might be heading.'

All other audience members:

'Unique experience. Nothing like any play I have watched. It will make you laugh cry and leave feeling full of joy!'

'I would probably just make it mandatory like Aisling's implant! Everyone needs to!'

'Thought-provoking and disturbing, in a good way. The play has potential to impact hearts and minds, and so to make a difference for individuals, families and society as a whole. Relevant to us all...'

Q8: Anything else you'd like to say before we let you go?

i. Less alone - praise - thankyou - impact on audience - wide appeal.

Student Nurses:

'Thank you so much, I really appreciate having the opportunity to see this show and feel that it's so generous to be able to attend for free. I absolutely loved the show and did get really emotional at times. I thought the characters were really well developed. I loved the story behind the idea of the show as well. As a student nurse I feel that I do think about things from another point of view. However, as someone who is on the autism spectrum and struggles with anxiety it was great to relate to some of the themes and why living with these experiences makes us who we are. Thank you so much, I really hope more people continue to see this show.'

'Thank you for bringing this to peoples attention. It made me feel less alone in the issues I've had and demonstrated it in such a beautiful way.'

'Thank you, It was amazing, I felt the passion.'

Health professionals & health lecturers:

'Professionally delivered & just brilliant!'

'It was a wonderful and powerful experience.'

'I brought my family to the play and they all found it very interesting (15 year old twins and my husband). My husband has physical health problems and the critique of the medical model resonated with him.'

Audience members who identified as having lived experience of the themes explored:

'The performance was incredible and it was amazing to watch it particularly in a blackbox theatre setting. The intimacy was definitely a key part of the experience tonight.'

'It was amazing from start to finish. I went through every emotion possible.'

'It's spectacular.'

'Amazing - hope to see more on this subject and for conversations about MH to be a natural conversation and not uncomfortable.'

'This is a truly brilliant piece of work. And clearly has had a profound impact on some of the audience members.'

'Really well done to all involved. I was moved and touch & found the whole thing very interesting & intense - loved it! Thank you all so much.'

All other audience members:

'Amazing watch. I liked to explore these themes and it was well portrayed. Big massive improvement from when it was in its first works back in 2020 when I watched it online.'

ii. More people need to see it.

Student nurses:

'Should compulsory part of training, as it is a creative form of exposure to other fields of practice for STNs.'

Health professionals & health lecturers:

'I am so glad I saw this play, on so many levels. I would also like to share this play with my fellow trainees--I'm wondering if there is a way that people will be able to see it in the future.'

Audience members who identified as having lived experience of the themes explored:

'I was blown away. I'd love to know how the research goes, and if there is another tour. I'd bring my friends and stay for Q&A.'

All other audience members:

'I really hope you can take the play on a national tour - this play needs to be seen by as many people as possible. Good luck!'

*'I wish you all the success you so deserve with The Possibility of Colour.
A question asked during the Q and A was,
Will there be a sequel?
Yes please!'*